



Welcome to the October Edition of
“On the Grapevine”,
The Myrtleford Lodge Resident & Representatives
Monthly Newsletter

“THE MORE YOU PRAISE AND
CELEBRATE YOUR LIFE, THE MORE
THERE IS IN LIFE TO CELEBRATE.”

-Oprah Winfrey

Seniors week

Monday 4th October to Sunday 10th October.



The Victorian Government has put together some fantastic online performances — presenting a diverse and rich mix of programming for an online and radio audience from now until the end of the year.

There are also some great online events to participate in. Learn something new, check out an online art exhibition or take in a film and for regional Victorians, check out live events in your area.

Visit [Seniors Online](#) for the full program.

Alpine Shire as part of Seniors week are holding a "Community Picnic in the Park" on Friday 8th October.

Myrtleford Lodge Residents have been registered to attend the event as part of our Diversional Therapy program.

Special Events Calendar

3rd October ~ Daylight Savings commences.



Remember to forward clocks 1 hour.

5th October ~ Market Day

6th October ~ Country Drive

7th October ~ An afternoon by the Fire Pit



12th October ~ Residents Meeting

13th October ~ Birthday Breakfast

20th October ~ Lunch outing

20th October ~ Country Drive



22nd October ~ Happy Hour

25th October ~ Indoor Ten Pin Bowling



27th October ~ Country Drive

28th October ~ An afternoon of Pampering

29th October ~ Craft demonstration

Additional activities are listed on the whiteboard daily including some new activities to take in the spring sunshine, gardening group activities, morning walks, morning and afternoon tea in the courtyards along with the popular daily exercises, board and card games, bingo and social gatherings and discussion groups.

Residents are reminded that everyone is always welcome to join in with the activities.

Activities at Myrtleford Lodge

Spring is definitely in the air enabling us to get out and about to enjoy watching spring bloom all around us, the countryside is

so green and the gardens starting to fill with color including our own garden at Myrtleford Lodge.



Residents have been enjoying a number of outings, pictured is Richard Richter, Jill Weight, Jenny Seewitz and Silvia Cabai who enjoyed an outing to the

deer farm at Wobonga Lane recently.

Pictured below is a group of ladies who enjoyed an afternoon tea together at Alpine Gate cafe, with warmer days expected, we are excited to be able to get out and about in the community.



Activities at Myrtleford Lodge

Our vegetable garden continues to thrive under the care of Silvio Facci and his team of helpers, currently we are enjoying the abundance of cabbages and broccoli fresh from the garden directly to the kitchen.



Pictured above are three of our very keen gardeners, Isobel Robertson, Jill Weight and Shirley Mitchell preparing to plant some cuttings.



Activities at Myrtleford Lodge



Our Mens group gathering and discussion group gatherings with Hugh is gaining momentum with large numbers attending to enjoy the company of others.

Arthur Quonoey and Sidney Rennef were pictured enjoying the afternoon.

Our mini Market days are also continuing to be a feature on the monthly calendar, a very big



thankyou to Jenny Seewitz who has been assisting the Diversional Therapy staff with assisting Residents with their purchases.



Activities at Myrtleford Lodge



One of our staff members has welcomed a new addition to their family recently, little Juno is a little Jack Russell puppy who came along to visit us recently much to the delight of all of the residents.

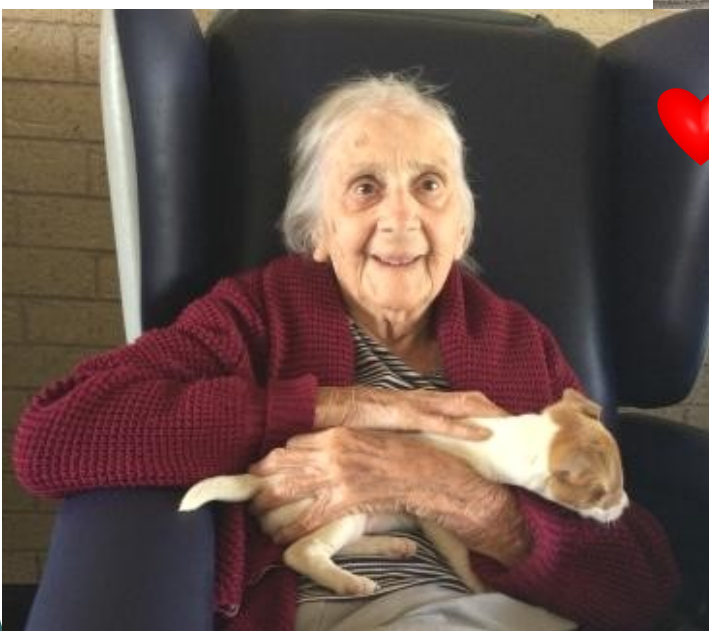


Almost everyone received a nurse of Juno who you can see by the photos looked very much at home with her owner promising to bring her back for another visit so that we



can see how fast she has grown.

Fran Bailey, Jennifer Seewitz and Nancy Binder are just three of the residents who were delighted to meet her.



In loving Memory of,
Paola Castagna
25/12/1931 ~ 26/08/2021

~~~~~

Harry Binder  
29/03/1926 ~ 04/09/2021

~~~~~

Audrey Farrar
14/04/1936 ~ 12/09/2021



Myrtleford Lodge Residents and Staff extend sincere condolences to the families and friends during this sad time.

They will
Many they rest in eternal peace.



With the warmer weather on it's way,
Residents are reminded to be aware of
staying hydrated and being sun smart
by wearing a hat, sun glasses and
sunscreen when spending time



October Birthdays

Laurel Quonoey ~ 6th October

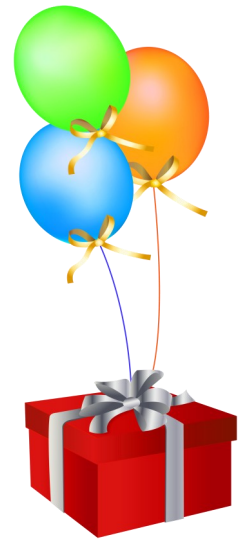
Arthur Quonoey ~ 10th October

Jeanette Blaxall ~ 11th October

Rosemary Capocasa ~ 20th October

Pat Waite ~ 26th October

Shirley Mitchell ~ 27th October



Myrtleford Lodge Residents and Staff wish you all a very Happy Birthday, may you enjoy your special day.



Pictured is Eva Meier and Ingrid Lein who both celebrated birthdays during September.



Myrtleford Lodge Representatives Survey 2021

Myrtleford Lodge Aged Care as part of our Continuous Improvement is conducting yearly Representatives Survey to assess how well the organisation is meeting the care recipient's needs, professional and reasonable expectations allow us to identify areas for improvement and to provide the opportunity for all consumer representatives to participate in continuous improvement. Representatives who have forwarded an email address to administration previously will receive this information by email.

Hold your device over a **QR Code** so that it's clearly visible within your Smartphone's screen (like when you are taking a photo of something). Two things can happen when you correctly hold your Smartphone over a **QR Code**. The phone automatically scans the **code**.

If necessary, press the button. Presto! You will be directed to the survey



Alternatively, type this link below to an internet browser to complete the survey.

<https://www.surveymonkey.com/r/MLrep2021>

Thank you for your participation!

Survey will close on the 31st of October 2021.

A note from the Administration Desk



Residents are reminded daylight savings commences on Sunday 3rd October, forward all clocks 1 hour ahead prior to going to sleep on Saturday 2nd

Newsletters and Calendars of events:

Newsletters and Calendars of daily events are distributed throughout the facility, however if you would like to receive the Newsletter by email, please advise Administration Staff of your email address or alternatively send an email to;

admin@myrtlefordlodge.com.au

and we will happily add you to our contacts list, alternatively the Newsletter can be viewed on our Website;

www.bentleywoodpl.com.au



Bentley Wood Aged Care acknowledges the Traditional Custodians of the land and pays respect to Elders both past and present.



Bentley Wood Aged Care acknowledges and respects the diversity of our community and our consumers.

